

## FITC Anti-Human CD62L Monoclonal Antibody



天津三箭生物技术股份有限公司  
Tianjin Sungene Biotech Co., Ltd.  
精准 高效 稳定 Precision Efficient Stable

Catalog Number	Vial Size
H10623-02G	25 tests
H10623-02H	100 tests

**Market** | 400-621-0003  
marketing@sungenebiotech.com

**Support** | 022-66211636-8024  
techsupport@sungenebiotech.com

**Web** | www.sungenebiotech.com

**Important Note:** Centrifuge before opening to ensure complete recovery of vial contents.  
This product is guaranteed up to one year from purchase.

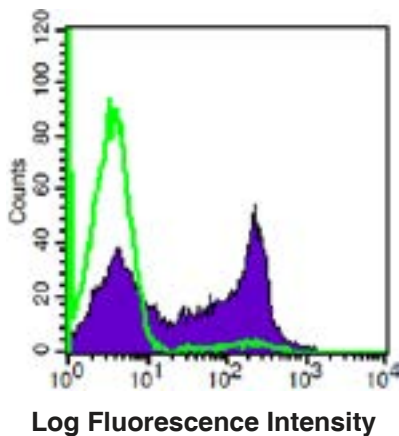
### Purified Antibody Characterization

Clone	Isotype	Reactivity
DREG56	Mouse IgG1	Human

### Description

CD62L is a 74-95 kD single chain type I glycoprotein referred to as L-selectin or LECAM-1. It is expressed on most peripheral blood B cells, subsets of T and NK cells, monocytes, granulocytes, and certain hematopoietic malignant cells. CD62L binds to carbohydrates present on certain glycoforms of CD34, glycam-1, and MAAdCAM-1 and with a low affinity to anionic oligosaccharide sequences related to sialylated Lewis X (sLex, CD15s) through its C-type lectin domain. CD62L is important for the homing of naïve lymphocytes to high endothelial venules in peripheral lymph nodes and Peyer's patches. It also plays a role in leukocyte rolling on activated endothelial cells.

### Illustration of Immunofluorescent Staining



Human peripheral blood lymphocytes  
stained with  
FITC anti-human CD62L

### Product Information

**Conjugation:** FITC

**Formulation:** PBS pH 7.2, 0.09% NaN<sub>3</sub>, 0.2% BSA

**Storage:** Keep as concentrated solution. Store at 4°C and protected from prolonged exposure to light. **Do not freeze.**

**Application:** Recommended Application: FC

**Usage:** Each lot of this antibody is quality control tested by immunofluorescent staining with flow cytometric analysis (The amount of the reagent is suggested to be used from 20 µL to 5 µL per 100 µL of peripheral blood. Please check your vial). Since applications vary, the appropriate dilutions must be determined for individual use.

### References

- [1] Kishimoto T, et al. 1990. P. Natl. Acad. Sci. USA 87:2244.
- [2] Kishimoto T, et al. 1991. Blood 78:805.

**For Research Use Only.**